

# OM

Grower: Farm Science Review

Farm: Molly Caren

Field: Field 7

Area: 202.48 ac

Lat: 39.96621°N

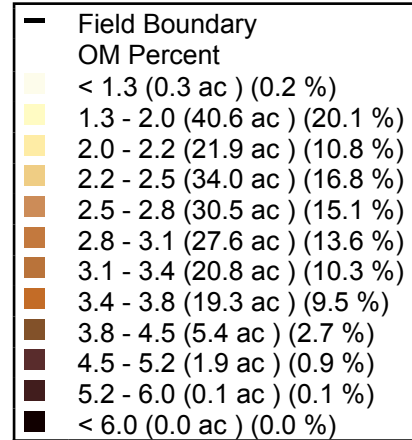
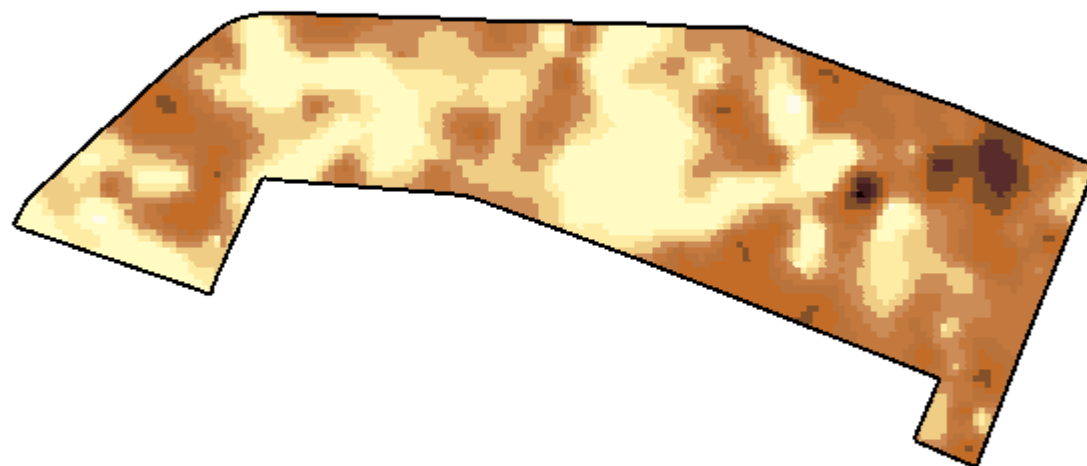
Lon: 083.44197°W

Season: 2012

Min: 1.01 Percent

Avg: 2.61 Percent

Max: 6.22 Percent



One in = 1207 feet

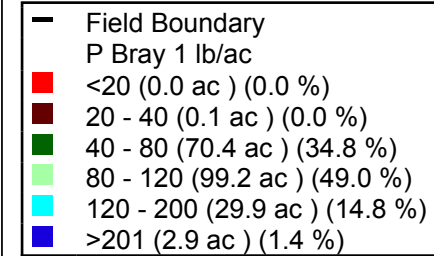
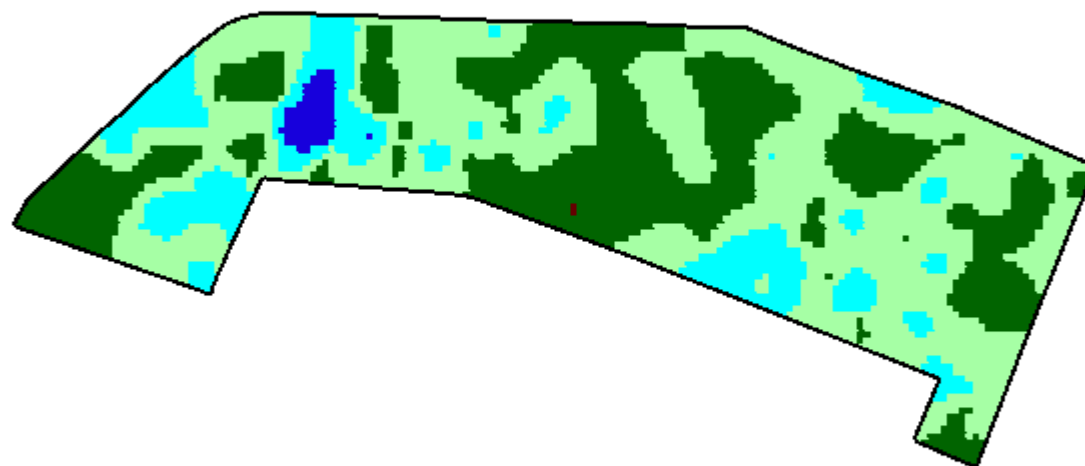
0 566 1131 1697 2262 2828



# P Bray 1

Grower: Farm Science Review  
 Farm: Molly Caren  
 Field: Field 7  
 Area: 202.48 ac  
 Lat: 39.96621°N  
 Lon: 083.44197°W

Season: 2012  
 Min: 38.20 lb/ac  
 Avg: 95.16 lb/ac  
 Max: 332.04 lb/ac



One in = 1207 feet

0 566 1131 1697 2262 2828



K

Grower: Farm Science Review

Farm: Molly Caren

Field: Field 7

Area: 202.48 ac

Lat: 39.96621°N

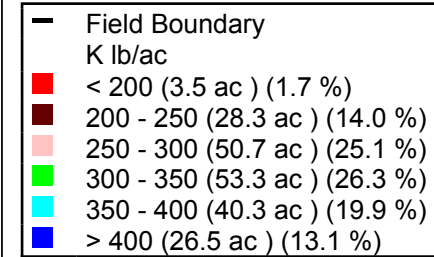
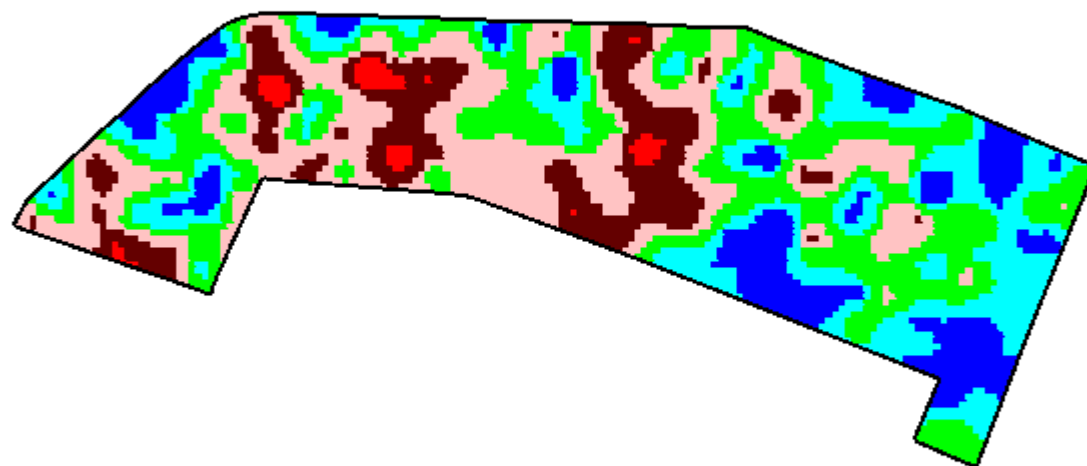
Lon: 083.44197°W

Season: 2012

Min: 137.02 lb/ac

Avg: 319.84 lb/ac

Max: 712.76 lb/ac



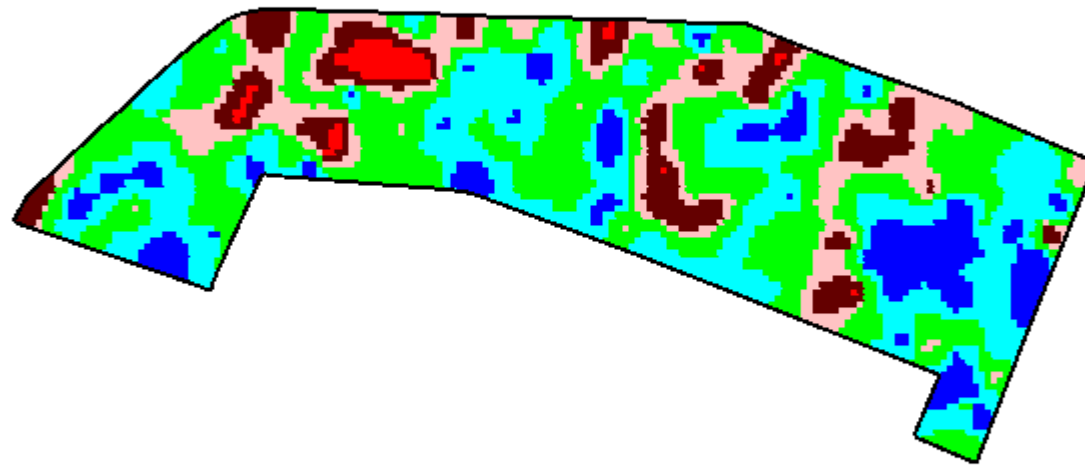
One in = 1207 feet



# pH

Grower: Farm Science Review  
Farm: Molly Caren  
Field: Field 7  
Area: 202.48 ac  
Lat: 39.96621°N  
Lon: 083.44197°W

Season: 2012  
Min: 5.07 PH SCALE  
Avg: 6.62 PH SCALE  
Max: 7.62 PH SCALE



—	Field Boundary
	pH PH SCALE
■	<5.6 (3.6 ac ) (1.8 %)
■	5.6-6.0 (19.8 ac ) (9.8 %)
■	6.0-6.3 (28.3 ac ) (14.0 %)
■	6.3-6.8 (71.1 ac ) (35.1 %)
■	6.8-7.2 (58.3 ac ) (28.8 %)
■	>7.3 (21.4 ac ) (10.6 %)



One in = 1207 feet

0 566 1131 1697 2262 2828

